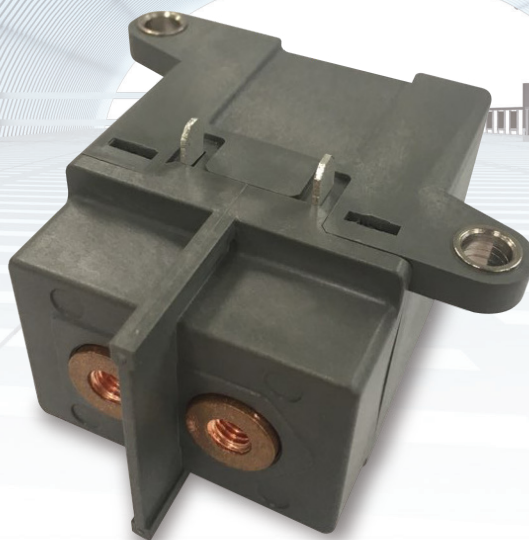


HVDC Relay

# GPR200 PCB

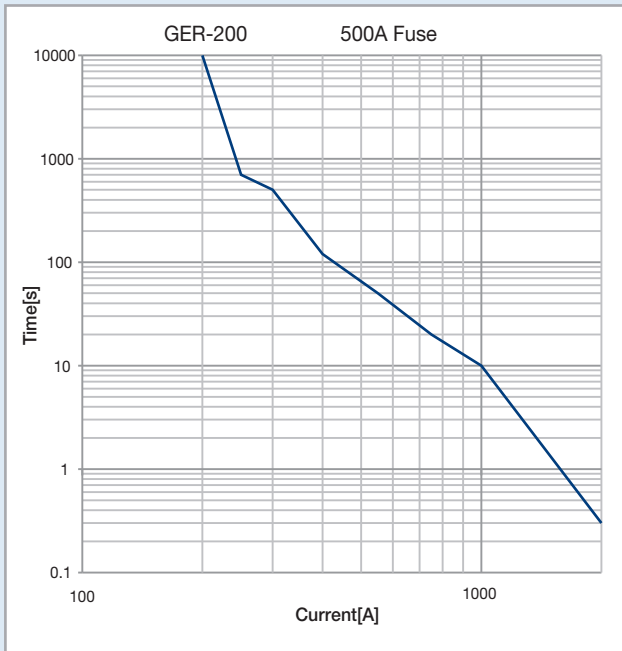
- PCB on-board
- EV & industrial HVDC Relay
- Superior reliability
- Uni-directional



Frame		GPR200	
Pole (P)		1	
Rated insulation voltage (Ui)		DC 500V	
Rated operational voltage (Ue)		DC 450V	
Rating	Continuous current (Ith)		200A (at -40~85°C)
	Rated operational current Ie (A)	DC 450V	200A
	Short time withstand current	500sec	300A
		120sec	400A
	Coil voltage		DC 12V

# Characteristics

## I-T Curve



### 1. Contact data

- 1) Max. continuous current: 200A (wire 50mm<sup>2</sup>)
- 2) Max. switching current (L/R < 1ms)  
: 200A 450V (20cpm)
- 3) Contact type: Uni-directional
- 4) Contact voltage drop (Initial): 0.02V at 20A

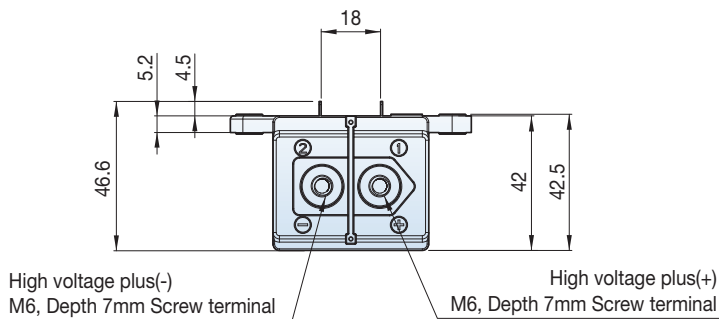
### 2. Expected life

- 1) Electrical life  
: 200A 450V (20cpm): 1,000cycles (Uni-directional)  
: 300A 450V (1cpm): 100cycles (Uni-directional)
- 2) Mechanical (60cpm): Min. 200,000ops

### 3. Withstand voltage

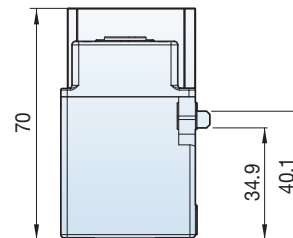
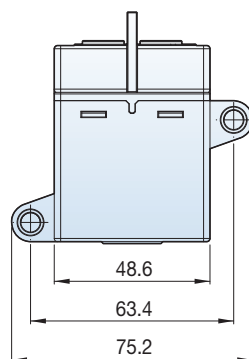
- 1) Contacts & coil: 2,500Vrms/min
- 2) Contacts & frame: 2,500Vrms/min
- 3) Coil & frame: 2,500Vrms/min

# Dimensions



#### General tolerance

Less than 10: ±0.25/10~50: ±0.5  
More than 50: ±0.8



According to The WEEE Directive, please do not discard the device with your household waste.